

U.S. Pork Center



of Excellence

Communities of National Cooperation

2010-2011 Annual Report

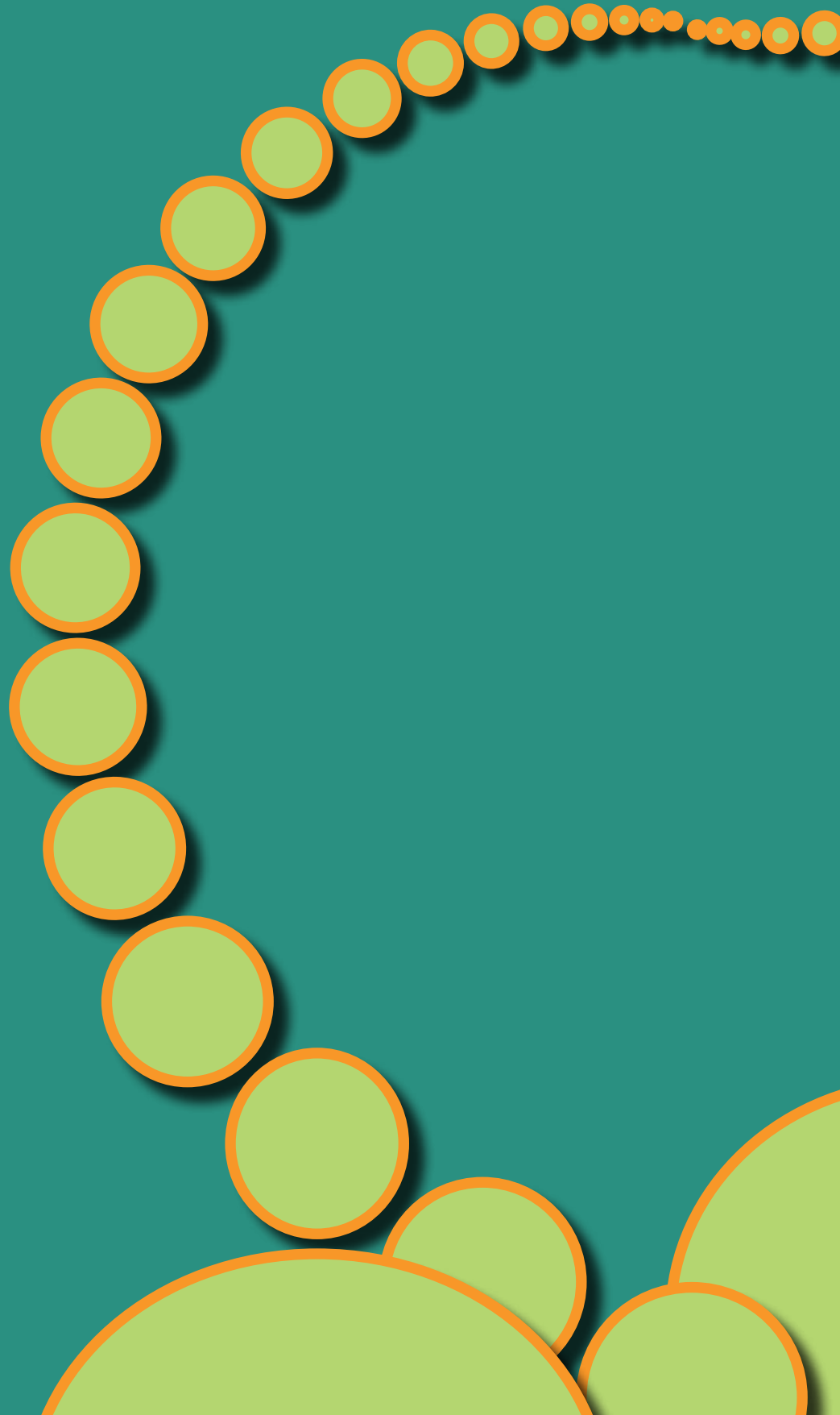


Table of Contents

USPCE Mission	5
USPCE Vision	5
USPCE Board of Directors	6
USPCE Staff	7
Letter from the Director	8
Major Milestones	9
2010/2011 Year End Financial Report	10
2011 Budget	11
Swine Science Online	12-13
Professional Swine Manager	14-15
Pork Information Gateway	16-17
National Swine Nutrition Guide	18-19
National Swine Reproduction Guide	20-21
Grants in Review	22-23
Making a Difference for the Pork Industry	24-25
USPCE Partners	26-27



USPCE Mission

The mission of the U.S. Pork Center of Excellence (USPCE) is to add value to the pork industry by facilitating research and learning for U.S. pork producers through national collaboration.

USPCE Vision

The vision of the USPCE is to advance

1. U.S. pork production as the world-class standard.
2. A new paradigm for how research is conducted and how information is delivered.
3. Society's understanding and valuing of U.S. pork producers' contributions to the economy, environment, community, and to consumer health and well-being.
4. A thriving U.S. pork production industry.

*USPCE
Board of
Directors*

Representing Corporate Sponsors
Dr. Paul Matzat, Elanco Animal health

Representing USDA/ARS *Ex-Officio*
Dr. Jerry Hatfield, USDA/ARS/NSC

Representing USDA/NIFA *Ex-Officio*
Adele Turzillo, USDA/NIFA

Representing State Extension Directors
Dean Beverly R. Durgan, University of Minnesota

Representing Colleges of Agriculture
Dean Bobby Moser, The Ohio State University

Representing Colleges of Veterinary Medicine
Dean Lisa Nolan, Iowa State University

Representing Departments of Animal Science
Dr. Rodney Geisert, University of Missouri

Representing Iowa State University
Dean Wendy Wintersteen, Iowa State University

Representing National Pork Board
Chris Novak, National Pork Board CEO
Leon Sheets, Ionia Pigs, Inc.
Derrick Sleezer, Sleezer, Inc.

Representing National Pork Producers Council
Neil Dierks, NPPC CEO
Mike Wehler, Wisconsin Pork Association
William Luckey, Luckey Farm

Representing State Pork Associations
Rich Degner, Iowa Pork Producers Association

USPCE Staff



David Meisinger
Executive Director

Dr. Meisinger oversees the operations of the USPCE. He is responsible for government and partner relations, public relations, and funding.



Maggie DenBeste
Program Coordinator

Maggie coordinates the Swine Science Online Program by working with swine educators across the country to develop and manage Swine Science Online courses. Her other duties include development of the Professional Swine Manager/ Technician Certification Program.



Barbara Kalsem
Administrative Assistant

Barb's time is shared with the Agriculture & Biosystems Engineering Department at Iowa State University. She is responsible for travel arrangements, accounts payable and receivable, and purchasing cards for employees.



Kelly Mescher Collins
Communications Specialist

Kelly is responsible for managing the Pork Information Gateway (PIG), USPCE and eXtension websites. Kelly also creates and executes the marketing plan for PIG, plans meetings, attends tradeshows, writes newsletters and designs collateral pieces for USPCE and its programs.



Connie Cannon
Grants Coordinator

Connie is responsible for preparing grant proposals for submission to the federal government, foundations, and non-government organizations. Connie also oversees the USPCE finances.



Chelsey Branderhorst
Intern

As a USPCE intern, Chelsey has been responsible for updating Pork Information Media Asset Portal (PIG MAP) and PIG Opportunities. She has also helped develop and compile the Swine Faculty Directory, ARS Research Results, and other important projects.



Erin Bouslog
Summer Intern

As a USPCE intern, Erin has been responsible for updating Pork Information Media Asset Portal (PIG MAP). She has also helped develop and compile the Swine Faculty Directory, ARS Research Results, and other important projects.

Letter from the Director

We have been advancing collaboration for the benefit of pork producers and for the pork industry for over six years now. To sustain and advance this effort for that long with nothing but soft money is quite remarkable. Our support has led us to a lot of interesting accomplishments. But it has also provided the U.S. Pork Center of Excellence and its Board of Directors with a lot of challenges in the funding arena.

Fortunately, we have been blessed with a great staff -- one of whom is an accomplished grant writer. This has resulted in us receiving a fair sampling of grants along the way. This funding has augmented our core support received from our partner institutions over the years and has helped



cover some of the fixed costs, including salaries and benefits for our small staff. It is very important to have the organization's direction in mind and established before looking at grant opportunities. We must avoid having the organization's direction driven by grants. To this end, we have focused on USPCE's vision in order to strategically decide our future direction. However, this has not been adequate. The USPCE seriously needs a concerted effort towards a facilitated

strategic planning session to determine a medium and longer term plan for the future. This only makes sense for the sake of all our investing partners.

Our small staff has done a commendable job working with a multitude of projects in research, teaching and extension for the benefit of pork producers nationwide. Kelly Mescher Collins handles the communications needs of our organization and oversees the Pork Information Gateway and all its domain leaders and advisory committees. In addition, she works with putting all this information onto the eXtension website. Maggie DenBeste is the education program leader and thus works with a couple of grant driven programs, including the Swine Science Online program and Professional Swine Managers educational and training effort. With the latter program, she also works closely with the National Pork Board on developing their certification program. The certification program will be tied to Professional Swine Managers. Connie Cannon is the grant writer referred to above. She also takes ultimate responsibility for the financial records and reporting of this information to the USPCE Board of Directors. Barb Kalsem is our half-time administrative assistant who handles all our staff and committee travel and takes care of administrative connections with the university.

We have been very pleased with our progress to date and look forward to many more years of successful programs for pork producers.

Dr. David J. Mesinger
Executive Director

Major Milestones



Swine Science Online (SSO) has had great success. To date, 191 students have beta-tested 18 different SSO courses. Since Fall 2010 official launch, 78 students have taken 15 SSO courses. Some students have already taken multiple SSO courses - a true testament to it's success! (More info on pgs.12-13).



The Professional Swine Manager (PSM) program began beta-testing in the Fall 2010 with the Sow Farm Management course. In 2011 and 2012, more courses will be beta-tested, followed by the program's launch in June 2012. (More info on pgs. 14-15).



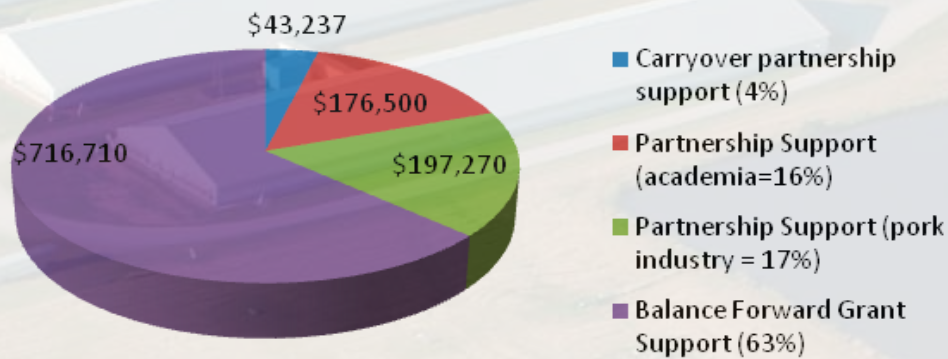
The U.S. Pork Center of Excellence (USPCE) website has seen a significant increase in traffic due to the full library of *National Swine Nutrition Guide (NSNG)* factsheets posted on the USPCE site. The *NSNG* continues to be a huge success. In fact, in 2011 the USPCE began working on the *NSNG* excretion module. This will include an expanded feedstuffs library, manure values and the Diet Formulation Software with metric conversions, due to a high interest and demand from foreign countries such as Canada, China, Korea, etc. (See pgs. 18-19).



USPCE attended the National FFA Convention and National Block & Bridle Convention in 2010 to promote the Pork Information Gateway. We increased the awareness of PIG with hundreds of high school and college students and educators. USPCE also attended 10 state tradeshow and the World Pork Expo, reaching hundreds of producers. (See pgs. 20-21 for more PIG information).

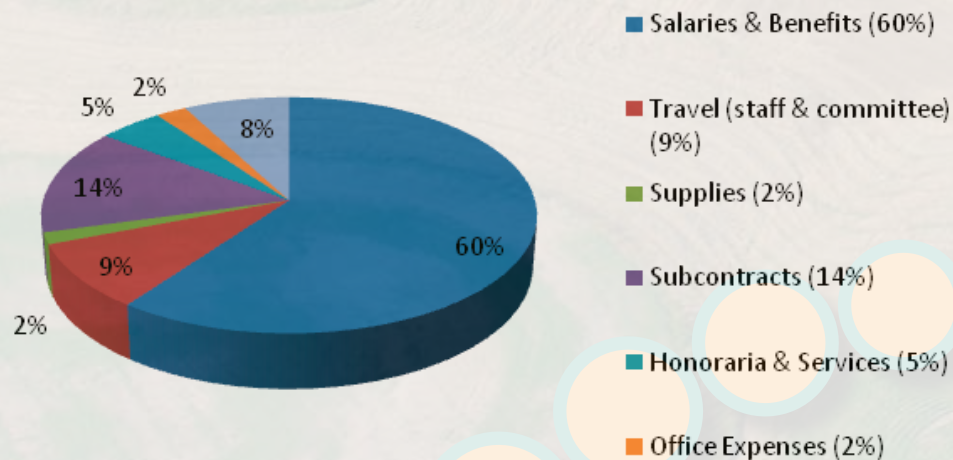
2010/2011 Year-End Financial

FY 2011 Revenue \$1,133,717*



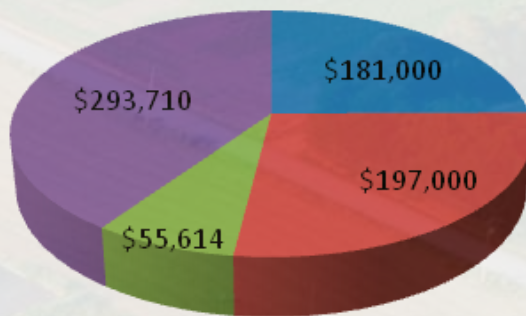
*63% of this amount is committed to multi-year grant projects

FY 2011 Expenses: \$651,019



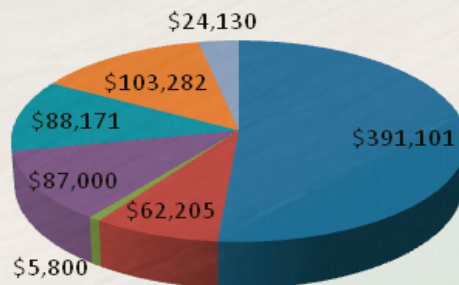
2011 Budgeted Revenue

FY 2012 Budgeted Revenue: \$727,324



- Partnership Support (academia=25%)
- Partnership Support (pork industry = 27%)
- Carryover Partnership Support (8%)
- Multi-Year Grant Support (40%)

FY 2012 Budgeted Expenditures \$761,689



- Salaries & Benefits (51%)
- Travel (staff & committee) (8%)
- Supplies (1%)
- Subcontracts (11%)
- Honoraria & Services (12%)
- Office Expenses (14%)
- Indirect Costs (3%)



After launching Fall 2010, Swine Science Online (SSO) is off to an extremely positive start.

SSO is the first ever online undergraduate program in swine science. Its vision is ensuring that the pork industry is led and managed by individuals who have broad educational and production experiences that better prepare them for these roles. SSO teaches scientific principles and management skills involved in pork production for an efficient and sustainable production system. The majority of courses are delivered via distance education to universities across the country through AG*IDEA.

These courses can have positive impacts on a student's career path, experts say.

"Being able to take these courses from such prominent specialists can really set them apart from other graduates, as they pursue careers with pigs," says Tim Safranski, associate professor at the University of Missouri. "We're really excited to have this opportunity to provide our students in-depth training in this comprehensive coverage of swine production."

Classes are currently offered at Colorado State University, Iowa State University, North Carolina State University, South Dakota State University and University of Missouri.

After earning a SSO certificate, students will be able to:

- Integrate disciplines and concepts with applications to facilitate problem solving, creating a more efficient production system.
- Combine understanding of scientific principles with management skills involved in pork production.
- Recognize and successfully compete for career opportunities within the pork industry.
- Apply personnel, facility, fiscal and livestock management principles and practices in swine enterprise.
- Demonstrate basic swine husbandry skills.
- Understand the impact of societal and industry issues and challenges on production management systems.
- Explain the pork industry structure and trends, including production, packing, marketing and integration.

Learn more about SSO at www.usporkcenter.org/home/projects/swine-science-online.

Policy Committee:

Chair: Dr. Jodi Sterle, Iowa State University
Vice-Chair: Dr. Tom J. Baas, Iowa State University
Dr. Don Boggs, Kansas State University
Dr. David Buchanan, North Dakota State
Dr. Kenneth Esehenshade, North Carolina State University
Dr. Alan Grant, Virginia Tech
Dr. Maynard Hogberg, Iowa State University
Dr. Nancy A. Irlbeck, Colorado State University
Mary Langhorst, Wakefield Pork
Dr. David Meisinger, U.S. Pork Center of Excellence
Dr. Ralph Noble, North Carolina A&T State University
Dr. Todd See, North Carolina State University
Maggie DenBeste, U.S. Pork Center of Excellence, Staff Coordinator

Curriculum Committee:

Dr. Tom J. Baas, Iowa State University
Dr. Kelly Zering, North Carolina State University
Dr. Charles Stark, North Carolina State University
Dr. Dana Hanson, North Carolina State University
Dr. Duane Reese, University of Nebraska-Lincoln
Dr. Tim Safranski, University of Missouri
Dr. Chris Hostetler, South Dakota State University
Dr. Sang Oh, North Carolina A&T University
Dr. Jodi Sterle, Iowa State University
Dr. Ken Kephart, Penn State University
Dr. Jay Harmon, Iowa State University
Dr. Billy Flowers, North Carolina State University
Dr. Jim Kliebenstein, Iowa State University
Dr. Locke Karriker, Iowa State University
Dr. Cindy Wood, Virginia Tech University
Dr. Mark Whitney, University of Minnesota
Dr. Don Boggs, Kansas State University
Dr. Todd See, North Carolina State University



Swine Science Online Courses

Required Courses (7 credits)

- Basic Swine Science (2 credits)
- Basic Swine Science Lab (1 credit)
- Swine Health and Biosecurity (1 credit)
- Employee Management for the Swine Industry (1 credit)
- Production Internship in the Swine Industry (1 credit)

Production Management Course (Choose ONE)

- Swine Breeding and Gestation Management (1 credit)
- Farrowing Management (1 credit)
- Swine Nursery and Finishing Management (1 credit)

Elective Courses (Choose FIVE)

- Swine Feed Mill Management (1 credit)
- Swine Nutrition (1 credit)
- Marketing and Risk Management in the Pork Industry (1 credit)
- Pork Product Quality and Safety (1 credit)
- Pork Export Markets (1 credit)
- Swine Environment Management (1 credit)
- Contemporary Issues in the Swine Industry (1 credit)
- Swine Manure and Nutrient Management (1 credit)
- Swine Business and Records Analysis (1 credit)
- Advanced Swine Science Lab (1 credit)

Production Management Course (Able to take TWO not taken as a req. course.)

- Swine Breeding and Gestation Management (1 credit)
- Farrowing Management (1 credit)
- Swine Nursery and Finishing Management (1 credit)

Questions? Contact Maggie DenBeste, SSO Program Coordinator at USPCE at (515)294-5231 or mdenbest@iastate.edu.

“This knowledge and experience is exactly what the industry is looking for in it’s new employees.”

Todd See
Animal Science Department Head
North Carolina State University



The Professional Swine Manager (PSM) program is another standout education program created by the U.S. Pork Center of Excellence (USPCE), National Pork Board (NPB) and community college partners. This program targets current pork production employees with a secondary audience of community or technical college students who wish to enter a pork production unit after graduation. The PSM program focuses on technical skills, providing a hybrid, distance education with hands-on learning provided by on-farm experience. The major objective of PSM is to connect practical farm knowledge and hands-on application with knowledge acquired in the classroom.

The USPCE and NPB received a Fund for the Improvement of Postsecondary Education (FIPSE) grant in 2009 to develop swine science curriculum at the community college level. PSM will allow community college students or current swine production employees to take courses through community colleges. On-farm work experience will be included in the curriculum. In order to become a Certified Professional Swine Manager or Technician

individuals can either enroll in the online PSM courses or document previous or current employment experience in the swine industry. Certification is provided through NPB.



USPCE and NPB will launch PSM in June 2012. Outcomes of the PSM program include:

- Student access to a comprehensive program delivering quality education in swine production.
- Increased potential for employment opportunities in the pork industry for students.
- A response to the shortage of educated, skilled workforce.
- Opportunities for community colleges to respond to industry needs.
- Affordable and accessible pork production courses that are available across the country.
- For more information about PSM, visit www.usporkcenter.org/home/projects.aspx or contact Maggie DenBeste, PSM program coordinator at mdenbest@iastate.edu or (515)294-5231.

Future Courses

Introduction to Swine Production

(Beta-testing Fall 2011)

Sow Farm Management

(Beta-tested Fall 2010)

Swine Grower/Finisher Management

(Beta-testing Fall 2011)

Employer/Employee Relations

(Beta-tested Spring 2011)

Facility Operations

(Beta-testing Spring 2012)

Production Records

(Best-testing Spring 2012)

Internship/Work Experience

(Best-testing Summer 2011)





PSM Curriculum Committee

Patrick Hosch, Instructor, Ellsworth Community College

Pete Neigebauer, Instructor, South Central Community College

Kristin Hammen, Instructor, Iowa Lakes Community College

Jeff Galle, Instructor, John Wood Community College

Mike Amstutz, Instructor, Ohio Agriculture Technical Institute

Mike Faga, Producer, Iowa Select Farms

Rich Rourke, Instructor, Kirkwood Community College

Bill Johnson, Instructor, Joliet Junior College

Paul Martin, Instructor, Muscatine Community College

“The goal of PSM is to develop a professional level of responsibility with the care, handling and management of pigs. As producers, we want consumers to feel confident in our safety and respect for animal welfare and the ethical use of resources in the manner in which their food is produced.”

Pete Niegebauer, PSM instructor, South Central College

Professional Swine Manager is based on the WeCare Principles



Pork Information Gateway



The U.S. Pork Center of Excellence (USPCE) continues to reach out to producers, farm workers, business professionals, veterinarians and students, informing them of the Pork Information Gateway (PIG) website. This website is truly one-of-a-kind, offering science-based, peer reviewed information written and reviewed by researchers at major agricultural universities across the U.S.

It's a non-biased website, providing information on all avenues of pork production to help producers with their operation. Topics covered by the experts range from production and management systems and human resources to animal behavior and welfare issues, breeding and genetics, swine nutrition, reproduction and environmental stewardship. There are 17 different topic areas covered on PIG.

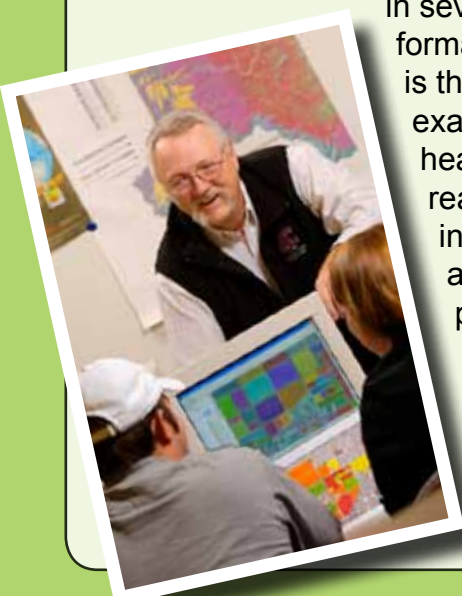
PIG provides information in several different formats. One format is the factsheet. For example, A swine health factsheet offers readers background information, signs and symptoms of the problem, diagnosis and treatment. Also found on PIG are 50 How-To's – quick one-pagers of

information that give readers step-by-step instructions on how to do something in their own operation. How-To's currently posted on PIG include "How-To Become OSHA Compliant," "How-To Complete OSHA Records," "How-To Start Nursery Pigs on Feed," "How-To Evaluate Boar Semen for Quality," etc, etc.

This is a real benefit to students and new college graduates who use PIG as references for coursework and papers, as well as finding internships and jobs once they enter the workforce. The USPCE lists new and updated job and internship opportunities on PIG as well. Learn more and get registered at www.porkgateway.org.

Topics on PIG

Production and Management Systems
Business Management
Human Resources
Swine Health
Animal Behavior & Welfare Issues
Breeding & Genetics
Swine Nutrition
Reproduction
Facilities & Equipment
Environmental Stewardship
Marketing
Pork Quality
Youth Projects
Statistics
Worker Health & Safety
Niche Production





“Everything is on one site. The Pork Information Gateway is handy, easy to read, and most of all – each Factsheet is focused on one item. This eliminates the need to read through lots of informaton that may not be relevant to my needs. PIG is truly a one-stop shop for information about raising pigs to handling employees better.”

Mike Swan, professor
Washington State
University

Marketing PIG

USPCE works hard to promote PIG and reach potential new users. In 2010/2011, USPCE informed and registered hundreds of students and educators at the National FFA Convention and National Block and Bridle Convention. Producers and business professionals were also informed and registered at tradeshowes in Kansas, Minnesota, South Dakota, North Dakota, Wisconsin, Missouri, Ohio, North Carolina, Iowa, Illinois and the World Pork Expo.

Thanks to funding from the National Pork Board, a half-page PIG ad was placed in *Checkoff Report*, NPB’s national magazine. And because of in-kind support from our state pork association partners, half-page and quarter-page ads appeared in the Illinois, Iowa, Indiana, Michigan, Missouri, Nebraska, Ohio, Pennsylvania, South Dakota and Wisconsin state magazines/newsletters. PIG is marketed and promoted on Facebook and Twitter, and soon you will find both PIG and USPCE videos and pictures on YouTube and Flickr.

Special Thanks to Domain Editors:

Todd See - North Carolina State University
Mark Whitney - University of Minnesota
Gary Thome - Riverland College
Morgan Morrow - North Carolina State University
Mike Swan - Washington State University
Yuzhi Li - University of Minnesota
Tom Baas - Iowa State University
Brian Richert - Purdue University
Rob Knox - University of Illinois
Stephen Pohl - South Dakota State University
Erin Cortus - South Dakota State University
Erica Rosa-Sanko - Livestock Marketing Info Center
Steve Moeller - The Ohio State University
Cathy Cutter - Penn State University
Chris Raines - Penn State University
Jodi Sterle - Texas A&M University
Palmer Holden - Iowa State University
Kerry Leedom-Larson - National Pork Board
David Newman - North Dakota State University



National Swine Nutrition Guide

The *National Swine Nutrition Guide (NSNG)* released in 2009 is a hit with producers, researchers, nutritionists, veterinarians and business professionals alike. The highly popular guide was made possible by funding from the United Soybean Board, and has since been shipped to countries all over the world with the companion *NSNG Diet Formulation Software* and *NSNG Tables on Nutrient Recommendations, Ingredient Composition and Use Rates*. The U.S. Pork Center of Excellence (USPCE) website has seen heavy traffic as well, due to the *NSNG's* popularity.

Over time, however, researchers and major contributors to the *NSNG* have realized there are a few areas where the *NSNG* guide could be expanded.

For instance, the

USPCE receives many calls regarding the *NSNG Diet Formulation*

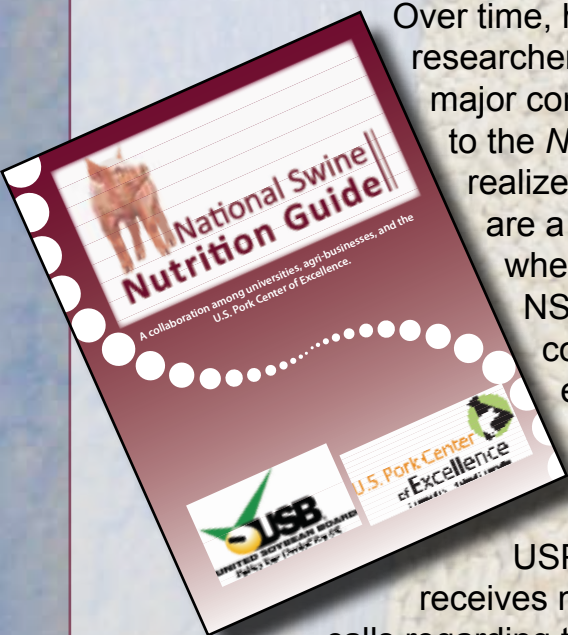
Software and whether it is available in the metric system, the common global measurement. As a result, the next version of the software will be available in the metric system.

Collaborators also realized that a need exists for an expanded list of feedstuffs, which will be updated in the feed library for the *NSNG* update. An erratum will also be prepared as a single sheet to insert into the front of each new book sold.

A least cost ration formulation will also be included in the software from a manure value perspective. In addition, a nutrient excretion module will be included in the updated *NSNG* package.

The *NSNG* is extremely popular and used on a regular basis in other countries, which is why the *NSNG* will be translated into several different languages, including Chinese and Vietnamese. The updated *NSNG* package is expected to be complete by the end of 2011.

For more information on the *NSNG* or to view the factsheets found in the guide, please visit www.usporkcenter.org.



“The National Swine Nutrition Guide represents the best practical knowledge and application of feeding pigs in the United States.”

Mark Honeyman, professor of animal science, Iowa State University



NSNG Steering Committee

Dr. Scott Carter
Oklahoma State University

Dr. Duane Reese (Chair)
University of Nebraska

Dr. Robert Thaler
South Dakota State University

Dr. Joel DeRouchev
Kansas State University

Dr. Brian Richert
Purdue University

Dr. Eric van Heugten
North Carolina State University

Dr. David Meisinger
U.S. Pork Center of Excellence

Dr. Marcia Shannon
University of Missouri

Dr. Mark Whitney
University of Minnesota

Dr. John Patience
Iowa State University

Dr. Hans Stein
University of Illinois

Ms. Charlotte Kirk Baer (*Ex-Officio*)
USDA/CSREES

Software Programmer
Garland Dahlke
Iowa State University

Reproduction

USPCE Kicks Off Work on *National Swine Reproduction Troubleshooting and Management Guide*

Work on the *National Swine Reproduction Troubleshooting and Management Guide* has begun. A group of nearly 20 researchers at the major state agricultural universities, USDA-ARS and related businesses are joining together to create a guide that will assist producers in finding solutions for reproduction issues on their farm. Topics covered include:

- Low farrowing rate
- Low litter size born live
- Decreased reproductive performance in second litter
- High pre-weaning mortality
- Late cycling weaned sows
- Anestrus weaned sows
- High sow non-productive days
- Non-cycling replacement gilts
- Weak signs of estrus in replacement gilts
- Marginally effective heat-check boars
- Low sow longevity
- Failed semen quality evaluations in young replacement boars
- Semen quality problems in mature boars/studs
- Increased uterine prolapse frequency
- Increased frequency of abortion
- Increased vulva discharge frequency.

This guide is not just an encyclopedia of reproduction-related problems. It's a hands-on manual for producers, farm managers and workers. This book will offer a "decision tree," letting readers select a specific problem they are experiencing in their operation. The "decision tree" then guides readers through factors to investigate and evaluate to reach a solution. This book is being entirely written, produced and peer-reviewed by researchers at

major state agricultural universities and industry experts, making it science-based and reliable.

Rob Knox, associate professor of animal science at the University of Illinois, says this book will positively impact producers.

"The guide will help producers seek and search for solutions to common problems encountered in the breeding herd," Knox says. "The troubleshooting guide will take producers through a sequence of steps as they input information about their own farm, and include data about the relevant problem. It will serve as an important tool that can provide insight to solutions for improving breeding herd management and performance."

The *National Swine Reproduction Troubleshooting and Management Guide* will be available in 2012.

Reproduction Collaborators

Wayne Singleton - Purdue University
Mark Estienne - Virginia Tech
Matt Wilson - West Virginia University
Billy Flowers - North Carolina State University
Rob Knox - University of Illinois
Don Levis - Levis Worldwide Swine Consultancy
Mark Knauer - North Carolina State University
Tom Gall - TriOak Foods, Inc.
Tim Safranski - University of Missouri
Jodi Sterle - Iowa State University
Jason Ross - Iowa State University
Jeremy Miles - USDA-ARS
Lea Rempel - USDA-ARS
Mark Whitney - University of Minnesota
Duane Davis - Kansas State University
Angela De Mirjyn - IVM Technologies, USA

“The National Swine Reproduction Troubleshooting and Management Guide will serve as an important tool that can provide insight to solutions for improving breeding herd management and performance.”

Rob Knox
associate professor of animal science
University of Illinois



Grants in Review

Grant writing is a little like gardening. Seeds are optimistically planted according to a master plan. It is exciting to see sprouts poke through and begin to grow, but then the real work begins to nurture them to maturity. If seeds don't sprout, it's time to reseed or find another way to realize the vision for the plot.

In FY' 11 the U.S. Pork Center of Excellence (USPCE) planted grant seeds like the exciting Climate Change Mitigation proposal. While it was not funded, USPCE reaped substantial benefits. It provided us with a host of new research, education and extension collaborators. Its positive reviews demonstrated that our proposal had vision, organizational capacity and national relevance.

Other seeds have been planted. In March we were encouraged to submit a proposal to USDA/NIFA for a conference to organize a Global Swine Education Alliance (G-SEA). In this project USPCE will bring together one academic and one

industry representative from each of six countries including the U.S. for the purpose of sharing successful, effective teaching and training strategies and resources. Participants will first share and showcase their education and training programs and resources and second, assess the value and/or nature of collaboration on common educational goals into the future. Expected outcomes include improved delivery of research data to producers and an increase in efficiency and reduction in duplication of efforts.

USPCE has also submitted a pre-proposal to Sustainable Agriculture research and Education/North Central region. The vision for this project is to undertake the development of a *Swine Environmental Stewardship Guide (SESG)*. This project's objectives are to use the USPCE established network of swine industry experts and land grant university swine specialists to develop the guide, and then disseminate it to all stakeholders using the Extension network and web based resources.

A third grant, recently submitted to the Department of Labor/OSHA, proposes to undertake a pilot effort toward improving worker safety in swine production facilities. USPCE would collect qualitative data, and then work collaboratively with NPB to pool data, assess issues, determine solutions and demonstrate the organizational capacity to collaboratively deliver those solutions for producers, managers and workers. USPCE will know in the fall what sprouts from

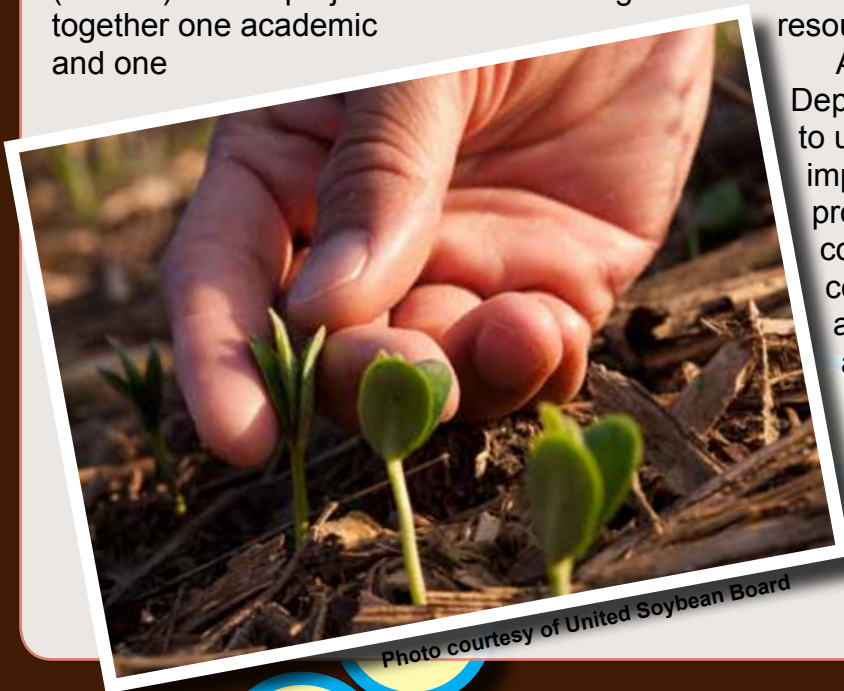


Photo courtesy of United Soybean Board



(continued...) these efforts.

In the meantime, there are other efforts underway to tap funding opportunities and move projects ahead. Collaborators on the climate change mitigation project continue to believe in the need for research to advance mitigation strategies and to get that information into the hands of producers. So this project will move forward, albeit at a slower pace. Instead of one large project, the research and dissemination pieces are being regrouped into smaller, workable pieces like the *SESG*, to fit other funding opportunities. A second, more detailed proposal for the larger *G-SEA* project has been developed and presented to industry partners, which takes this project to the next phase with a world-wide inventory of programs and resources, a website devoted to research collaboration, sharing of information on education and teaching resources, and opportunities geared to the development of the next generation of swine production leaders. Also, USPCE has offered a proposal to industry partners for funding to support the *National Swine Reproduction Troubleshooting and Management Guide*, whose design is already under way. Throughout the year USPCE staff has also made three trips to

Washington, D.C. to garner support for this center of excellence as a “program of record” and to promote USPCE with federal funding agencies.

Swine Science Online and Professional Swine Manager projects continue to enjoy federal grant support until September and December respectively. NPB has granted supplemental support to SSO as the project moves into the self-sustainability phase through the end of the calendar year. Both of these projects are progressing on schedule according to federal grant proposals. *National Swine Nutrition Guide’s* nutrient excretion module, updates and erratum are on schedule to be completed by December 31, 2011 when the United Soybean Board grant expires. This project is further supported by NSNG sales.

Driven by the USPCE mission and vision, this organization has planted a host of seeds this year. FY ‘12 will be another challenging year. USPCE will be working consistently to add value to the pork industry by facilitating research and learning for U.S. pork producers through national collaboration. We are very enthusiastic about what will sprout and what we have the capacity to nurture and grow.

Making a Difference in the pork industry

When the U.S. Pork Center of Excellence (USPCE) was created in 2005, it was built upon the need for more coordination, cooperation and collaboration in the industry. Soon commitments and support were made by USDA-ARS, the National Pork Board, National Pork Producers Council, many land-grant universities and state pork associations.

Today — six years later — the USPCE is making a difference. And not just in the lives of pork producers — but the entire pork production industry. We are doing that through a number of our projects. USPCE is positively impacting producers, nutritionists, veterinarians, educators and students around the world with the the *National Swine Nutrition Guide*. This book provides science-based, peer-reviewed information written by experts at some of the major state agricultural universities. Ultimately, it helps producers adequately provide a healthy, cost effective diet for their herds at all stages of production.

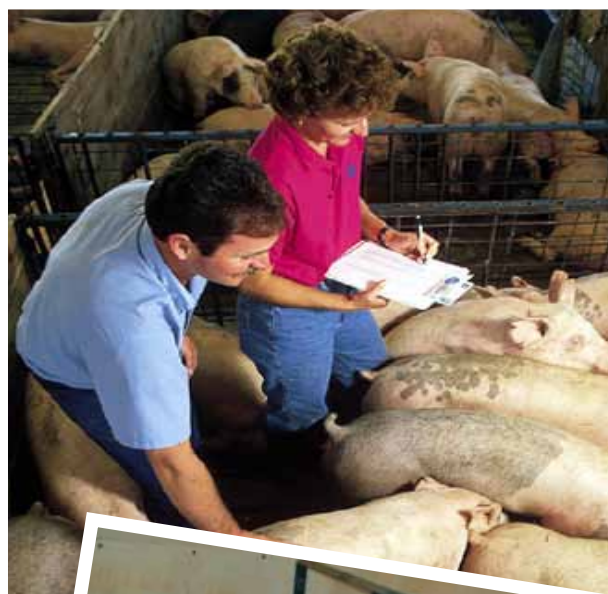
The Swine Science Online (SSO) and Professional Swine Manager (PSM) educational programs are creating a much more educated and experienced workforce. Students who take the SSO and PSM classes will study under some of the top swine experts in the country, have hands-on experience and earn a certification. Our future workforce will have more knowledge and experience than

ever before. This educated and skilled workforce will have positive ripple effects throughout the pork production chain.

The Pork Information Gateway (PIG) is assisting producers, educators, students and veterinarians by providing highly reliable, science-based and peer reviewed information written by researchers at the major agricultural universities. The factsheets on PIG provide answers to questions regarding facilities and equipment, swine health and diseases, breeding and genetics, etc. The How-To's on PIG give producers step-by-step, hands-on instructions for their operation.

USPCE is truly making a positive difference in the pork production industry — from the college students and educators in the classroom to the producers on the farm and swine nutritionists seeking science-based, reliable ration information. USPCE is adding value to the pork industry by sticking to our original mission: “Facilitating research and learning for U.S. pork producers through national collaboration.”

Bookmark www.usporkcenter.org to keep up-to-date on USPCE's many projects! Or follow us on Facebook and Twitter!



“Perfection is not attainable, but if we chase perfection we can catch excellence.”

Vince Lombardi, winning Green Bay Packers head coach, 1959-67

USPCE Partners

Government Sectors



National Pork Organizations



State Pork Associations



Illinois Pork Producers.
Generations of Commitment.





Land Grant Universities



U.S. Pork Center of Excellence

1202 NSRIC

Iowa State University

Ames, IA 50011

Telephone: 515.294.8891

E-mail: uspce@iastate.edu

www.sporkcenter.org

Join Us!

